

# DESCRIPTION OF A NEW SPECIES OF *STYPHACUS* FAIRMAIRE, 1901 (COLEOPTERA: TENEBRIONIDAE: PLATYNOTINI)

JULIO FERRER

*Stora Hundensgata 631, 136 64 Haninge, Sweden, e-mail: julio\_ferrer@hotmail.com*

**Abstract.**— A tenebrionid beetle, preserved in the Zoological Museum “La Specola” of the University of Florens, belonging to the genus *Styphacus* Fairmaire (1901), subfamily Opatrinae, tribe Platynotini, recently revised by Iwan (1996) is described and figured in this paper.



**Key words.**— Madagascar, Coleoptera, Tenebrionidae, Opatrinae, Platynotyni, *Styphacus*, new species.

## INTRODUCTION

The tenebrionid-beetles, collected by Dr Luca Bartolozzi et al., under the Italian expedition to Madagascar, organized by the Museum of Zoology of the University of Florens, under 1991, has been recently reported (Ferrer 1998). However, one specimen belonging to the genus *Styphacus* Fairmaire 1901, was overlooked and forgotten in a box.

The genus *Styphacus* belongs to the melanocratoid Platynotina systematically placed to the subfamily Opatrinae sensu Iwan (2002). The group has been recently revised by Iwan (1996). However, to introduce and identify this species, the key of *Styphacus*, provided by this author, has to be modified as following.

## Key to species of *Styphacus* (cf. Iwan 1996: 430)

- a) Species exhibiting a fine carina from the base of elytra to the strongly demarcated calus humeral (Fig. 6), male abdominal ventrite flat and fore tibiae in male strongly widened on the internal side (Figs 3–4) . . . . . *iwani* sp. nov.
- b) Species exhibiting the base of elytra margined or not and the fore tibiae either slightly bent or narrow, bent inwards, but never configured as in the Figs 3–4 . . . . 1

## SYSTEMATICS

*Styphacus iwani* sp. nov.

**Diagnosis.** The species is placed in the proximity of *S. neuter* and *S. bartolozzii*, described by Iwan (1996),

due to the relatively short elytra. It differs from *S. kochi* Iwan (1996) in the bordering of anterior margin of elytra. The configuration of the male fore tibia is similar, but not so arcuate as in *S. decorsei* Fairmaire (1901), which is a much larger species.

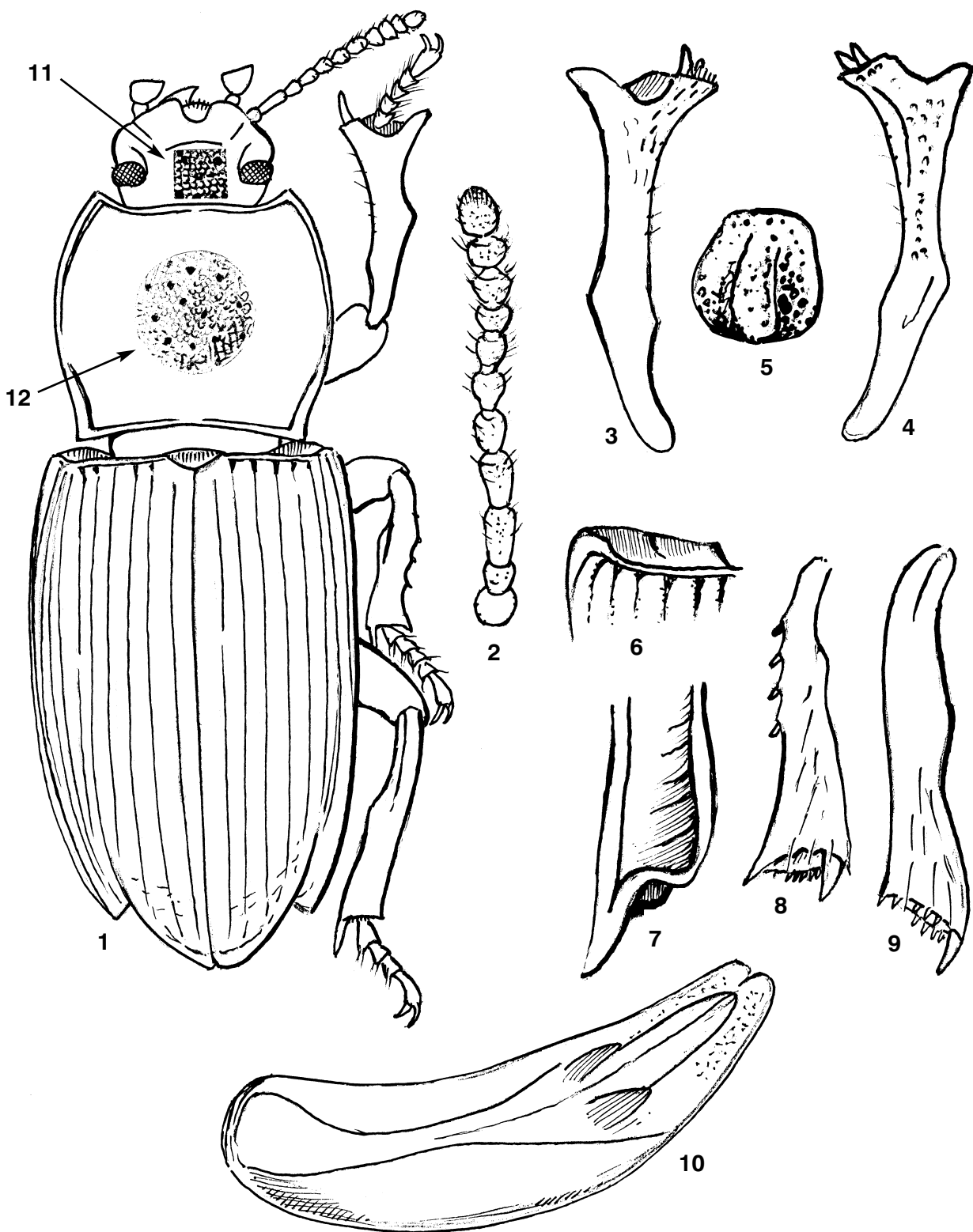
**Description.** Body length: 12.5 mm, max. width of elytra: 4.9 mm.

Body blackish brown, shiny, the head duller, sericeous, as results of the stronger isodimetrical reticulation of the integument.

Head transverse, deeply punctured (Fig. 11), the clypeus widely incised, forming a broad U, the lateral zones protruding outwards and obtuse, demarcated at each side from the front, by a fine line, separating the clypeal from the genal zone; front convex and elevated between the eyes, which are reniforms and well separated by a distance equivalent to about 6 times the diameter of an eye, measured dorsally. Temporal contours of the head constricted backwards. Antennae (Fig. 2).

Pronotum nearly quadrate (long: 4.2 mm, width: 3.5 mm). Anterior margin broadly opened, the anterior angles protruding outwards, obtuse, the posterior right, the lateral zones regularly curved and situated basally, before the posterior angles, margined by a strong carina, becoming a little smaller at middle. Base constricted medially, nearly right at each side, the middle impressed and concave, strongly margined. The tegument sparsely covered by very fine punctures, only conspicuous from a luminous angle (Fig. 12), the space between two punctures surpassing the diameter of a puncture. The cephalic punctures are stronger, separated as in the pronotum.

Elytra as in *S. bartolozzii*, the humeral calus and base as in the Fig. 6. The scutellum very small and



Figures 1–12. *Styphacus iwani* sp. nov. (1) Habitus; (2) antenna; (3–4) male fore tibia, dorsal and ventral view; (5) mentum; (6) calus humeral; (7) apex of elytra, dorsal view (lateral carina), apex of elytra, ventral view (epipleura); (8) male mesotibia, dorsal view; (9) male metatibia, dorsal view; (10) aedeagus, ventral view; (11) discal sculpture of the head; (12) discal sculpture of pronotum.

broad, the sides of the elytra subparallel, becoming acuminate apically. The pre-apical termination as in the Fig. 7. The sutural and the discal intervals flat, the other slightly convex, the posterior declivity forming with the horizontal axis of the body an angle of 45°.

Ventral side shiny and glabrous, except some golden-red hairs, emerging from the sides of the prosternal apophyse and from coxae. Mentum impressed at each side (Fig. 5). Apophyse of prosternum broadly margined at each side and inflexed between coxae. Epipleura largely dilated anteriorly and concave, shiny, and strongly constricted, posteriorly, before apex (Figs 1 and 7). Surface without punctures, except the abdomen. The punctures are very fine and becoming obsolete on the first sternite, particularly intensified and densely disposed on the two posterior sternites, which are strongly impressed anteriorly by a transversal sulcus. The anal sternite unmargined.

Fore tibia strongly dilated at middle and constricted basally (Figs 3–4). Intermediate and posterior legs curved, as in other species of this genus (Figs 8–9).

Aedeagus as in Fig. 10.

Female unknown.

**Type material.** Holotype: male, Madagascar: between Aspanihy and Belohe, 20 Km from Belohe, 22.V.1991, L. Bartolozzi, S. Taiti and C. Raharimina leg.

(preserved in the Museo Zoologico de La Specola, University of Florence.)

**Distribution.** The species of the genus *Styphacus* are endemic from Madagascar. This new species is only known from the type locality.

**Name derivation.** Named after Dr. Dariusz Iwan, Polish Academy of Sciences, Warszawa.

## ACKNOWLEDGEMENTS

To Dr. Luca Bartolozzi, Museo Zoologico de La Specola, University of Florence and to Dr. Dariusz Iwan, Polish Academy of Sciences, Warszawa.

## REFERENCES

- Ferrer, J. 1998. Contribution à la connaissance des Tenebrionidae de Madagascar. (Insecta, Coleoptera). *Entomofauna, Zeitschrift für Entomologie*, 19. (23): 353–404.
- Iwan, D. 1996. Revision of the genera of the newly-established group of Madagascan melanocratoid Platynotina. *Coleoptera, Tenebrionidae, Platynotini. Genus*, 7. (13): 379–449.
- Iwan, D. 2001. A comparative study of male genitalia in Opatrinae *sensu* Medvedev (1968) (Coleoptera, Tenebrionidae), with notes on the tribal classification, part 1. *Annales Zoologici (Warszawa)* 51. (3): 351–390.

Received: June 10, 2002

Accepted: September 2, 2002